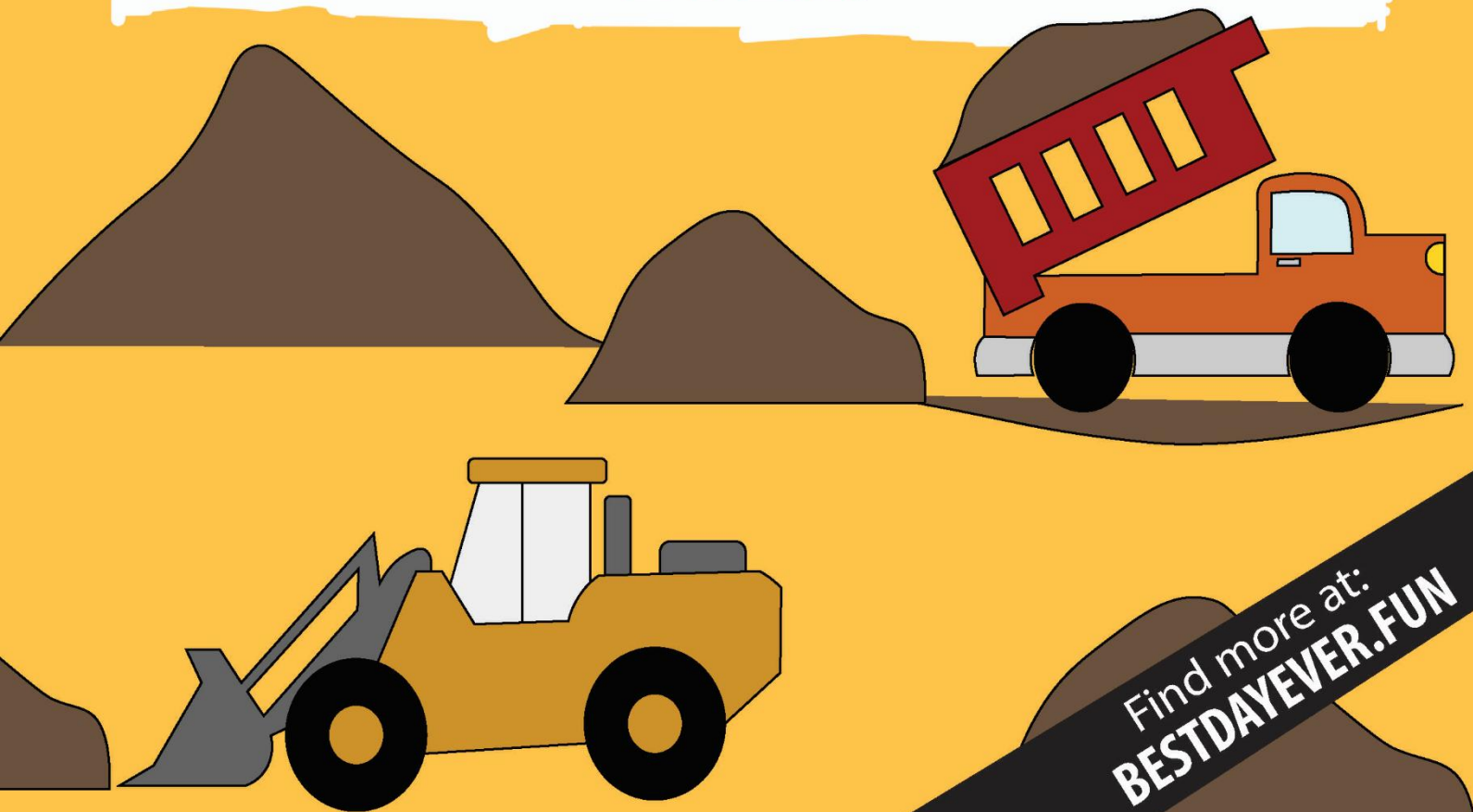


CONSTRUCTION JUNCTION

5 DAYS OF THEMED PRESCHOOL
SUMMER CAMP LESSONS

**BEST
DAY
EVER!**



Find more at:
BESTDAYEVER.FUN

CONSTRUCTION JUNCTION

Do you have a preschooler that loves to build? Camp Construction Junction is an interactive preschool lesson plan that encourages children to construct knowledge through meaningful play, thoughtfully planned activities, and active exploration of the environment. While the lesson plan incorporates many different Pennsylvania Learning Standards, Construction Junction focuses on the key learning area of “Constructing and Gathering Knowledge.” Specifically, children will engage in learning activities that meet the PA Standard Area of “Curiosity and Initiative.”

.....

SCHEDULE

DAY 1

ARRIVAL ACTIVITY - BRICK BUILDING	20 MINUTES
CIRCLE TIME	15 MINUTES
HANDS-ON ACTIVITY - BUILD WITH WOOD	20 MINUTES
BATHROOM BREAK	15 MINUTES
OUTSIDE PLAY	30 MINUTES
SNACK	15 MINUTES
TABLE ACTIVITY - STACKING CUPS	15 MINUTES
CENTER PLAY - BLOCK CENTER	30 MINUTES
STORY TIME	10 MINUTES
CIRCLE TIME - PICK UP	15 MINUTES

DAY 2

ARRIVAL ACTIVITY - COLOR SORT	20 MINUTES
CIRCLE TIME	15 MINUTES
THEMED ACTIVITY - DUMP TRUCK CRAFT	20 MINUTES
BATHROOM BREAK	15 MINUTES
OUTSIDE PLAY	30 MINUTES
SNACK	15 MINUTES
TABLE ACTIVITY - CONSTRUCTION TRUCK RACE	15 MINUTES
CENTER PLAY - SENSORY TABLE	30 MINUTES
STORY TIME	10 MINUTES
CIRCLE TIME - PICK UP	15 MINUTES

DAY 3

ARRIVAL ACTIVITY - TOOL TIME	20 MINUTES
CIRCLE TIME	15 MINUTES
HANDS-ON ACTIVITY - NUTS AND BOLTS PAINTING	20 MINUTES
BATHROOM BREAK	15 MINUTES
OUTSIDE PLAY	30 MINUTES
SNACK	15 MINUTES
TABLE ACTIVITY - TOOLBOX CRAFT	15 MINUTES
CENTER PLAY - DRAMATIC PLAY	15 MINUTES
STORY TIME	10 MINUTES
CIRCLE TIME - PICK UP	15 MINUTES

DAY 4

ARRIVAL ACTIVITY - PLAY DOUGH FUN	15 MINUTES
CIRCLE TIME	15 MINUTES
HANDS-ON ACTIVITY - DEMOLISHING CREW	20 MINUTES
BATHROOM BREAK	15 MINUTES
OUTSIDE PLAY	30 MINUTES
SNACK	15 MINUTES
TABLE ACTIVITY - PAINT THE HARDHAT	15 MINUTES
CENTER PLAY - SCIENCE CENTER	30 MINUTES
STORY TIME	10 MINUTES
CIRCLE TIME - PICK UP	15 MINUTES

DAY 5

ARRIVAL ACTIVITY - CONSTRUCTION PUZZLES	20 MINUTES
CIRCLE TIME	15 MINUTES
HANDS-ON ACTIVITY - CONSTRUCTION ZONE SIGNS	20 MINUTES
BATHROOM BREAK	15 MINUTES
OUTSIDE PLAY	30 MINUTES
SNACK	15 MINUTES
TABLE ACTIVITY - DRIVE ON YOUR NAME	15 MINUTES
CENTER PLAY - MATH CENTER	30 MINUTES
STORY TIME	10 MINUTES
CIRCLE TIME - PICK UP	15 MINUTES

MATERIALS LIST

- Glue
- Crayons
- Scissors
- Markers
- Play dough
- Calendar
- Pointer
- Flag
- Weather chart
- List of songs
- Music player
- Wooden craft sticks in a variety of sizes, widths, and lengths
- Construction paper (white)
- Outdoor/Gross motor equipment*
- Plastic drinking cups
- Plastic ants
- Picnic basket
- Play foods
- Plates
- Pompoms in various colors (large and small)
- Basket
- Toy construction vehicles
- Large plastic building bricks
- Small containers (cups or bowls in assorted colors)
- Pictures of different construction vehicles
- Blue construction paper
- Brown tissue paper cut into 1" squares
- Baskets
- Sand
- Gravel
- Rocks
- Toy cars and trucks
- Toy construction vehicles
- Wooden blocks with small holes pre-drilled
- Small screws
- Washers
- Small screwdrivers
- Small wrenches
- Small screwdrivers
- Bolts of various sizes
- Screws of various sizes with flat tips
- Toy tools
- Paint (black, assorted colors)
- Bowls
- File folders
- Hard hats
- Vests
- Blueprint images
- Toy tools
- Tool belts
- Large cardboard blocks for building
- Toy construction vehicles
- List of songs
- Plastic hard hats
- Plastic cups
- "Wrecking balls" (tennis balls with a 12" string taped onto it.)
- Timer
- Finger paints in various colors
- Blocks of wood with pre-drilled holes
- Drill with small drill bit
- Safety glasses
- Construction puzzles
- Cardstock cut into 5" x 5" squares
- Craft sticks (regular size)
- Jumbo craft sticks
- White foam board
- Foam paintbrushes
- White foam board
- White paint pen
- Optional: ride-on construction vehicles
- Optional: cardboard boxes

DAY 1 – LET’S BUILD



ACTIVITY/CONCENTRATION

ARRIVAL ACTIVITY - BRICK BUILDING

Encourage children to use large building bricks to create structures of different heights.



DURATION/SCHEDULE

20 minutes – 9 to 9:20 a.m.



MATERIALS

- Large plastic building bricks



LEARNER MODIFICATIONS



GOALS/OBJECTIVES

- Use hands, fingers, and wrists to manipulate objects
- Coordinate eye and hand movements to perform a task



STANDARDS

- 10.5 PK.A
- 10.5 PK.B



ACTIVITY/CONCENTRATION

CIRCLE TIME

- Attendance
- Weather
- Calendar
- Flag
- Discuss construction:
 - What does the word **construction** mean?
 - Ask; “What do you know about construction?”
 - This week at camp we will be doing lots of fun construction activities!



DURATION/SCHEDULE

15 minutes – 9:20 to 9:35 a.m.



MATERIALS

- Pointer
- Flag
- Calendar
- Weather chart



GOALS/OBJECTIVES

- Relate information and/or experiences from the past
- Relate personal experiences during school activities